

2006 NORTH CAROLINA RECREATIONAL COASTAL WATERS GUIDE FOR SPORTS FISHERMEN October version

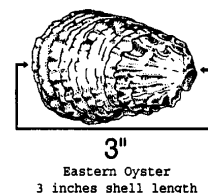
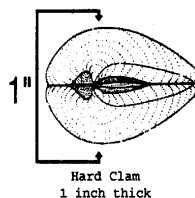
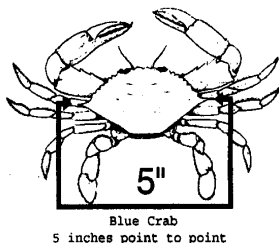
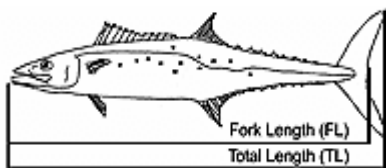
****IMPORTANT** CHECK WITH DIVISION OF MARINE FISHERIES FOR MOST CURRENT MINIMUM LENGTHS AND CREEL LIMITS.
(252) 726-7021 OR (800) 682-2632. FOR INLAND WATER LIMITS, CALL WILDLIFE RESOURCE COMMISSION (919) 707-0220 OR WWW.NCWILDLIFE.ORG**

	STATE COASTAL WATERS (Internal & 0-3 miles)		EXCLUSIVE ECONOMIC ZONE-EEZ (3-200 miles) EEZ restrictions noted in <i>italic</i> are Federal Rules	
FINFISH SPECIES (note symbols)	Minimum Length	Bag Limits (per person)	Minimum Length	Bag Limits (per person)
Greater Amberjack	28" FL	1/Day	<i>28" FL</i>	<i>1/Day</i>
Bluefish		15/Day, only 5 greater than 24" TL		<i>15/Day</i>
Cobia	33" FL	2/Day	<i>33" FL</i>	<i>2/Day</i>
Wahoo		2/Day		<i>2/Day</i>
Dolphin (B)		10/Day		<i>10/Day</i>
King Mackerel (J)	24" FL	3/Day	<i>24" FL</i>	<i>3/Day</i>
Spanish Mackerel (J)	12" FL	15/Day	<i>12" FL</i>	<i>15/Day</i>
Tuna; Yellowfin, Bluefin, and Bigeye (J) (H)			<i>27" Curved FL</i>	<i>Yellowfin tuna bag limit 3 per person per day</i>
Sharks (excluding spiny & smooth dogfish)(N)	(L)		<i>54" FL (F)</i>	<i>1/Vessel/Day</i>
Sharks, Atlantic Sharpnose (J)	(L)		<i>(F)</i>	<i>1/Day</i>
Blue Marlin (H)	99" LJFL	1 per vessel per trip, either blue marlin or white marlin	<i>99" LJFL</i>	
White Marlin (H)	66" LJFL		<i>66" LJFL</i>	
Sailfish (H)	63" LJFL	1/Day	<i>63" LJFL</i>	
Red Drum (channel bass, puppy drum)	18-27" TL (D)	1/Day	UNLAWFUL TO POSSESS	
Flounder	14" TL	8/Day	<i>14" TL</i>	<i>8/Day</i>
Spotted Seatrout (Speckled)	12" TL	10/Day	<i>12" TL</i>	<i>10/Day</i>
Weakfish (Gray Trout)	12" TL	7/Day	<i>12" TL</i>	<i>7/Day</i>
Tarpon		1/Day		<i>1/Day</i>
Striped Bass	(A)	(A)	UNLAWFUL TO POSSESS	
American and Hickory Shad (M)		10/Day		<i>10/Day</i>
Alewife and Blueback Herring (M)				
American Eel	6" TL	50/Day	<i>6" TL</i>	<i>50/Day</i>
Scup (North of Cape Hatteras)	10" TL	50/Day	<i>10" TL</i>	<i>50/Day (E)</i>
Black Sea Bass (North of Cape Hatteras) (C)	12" TL	25/Day	<i>12" TL</i>	<i>25/Day</i>
Black Sea Bass (South of Cape Hatteras)	11" TL	15/Day	<i>11" TL</i>	<i>15/Day</i>
Groupers (K & J)				
Red, Scamp, Yellowfin & Yellowmouth Groupers	20" TL	5/Day (all groupers combined; includes only 1 speckled hind, 1 warsaw, 1 golden tilefish, 1 snowy, and no more than 2 black or gag grouper, individual or combined) (K)	<i>20" TL</i>	<i>5/Day (all groupers combined; includes tilefish, only 1 speckled hind, 1 warsaw, 1 snowy, 1 golden tilefish, and no more than 2 black or gag grouper, individual or combined) (K)</i>
Black and Gag Groupers	24" TL		<i>24" TL</i>	
Speckled Hind (Kitty Mitchell)			<i>1/Vessel/Trip</i>	
Warsaw Grouper			<i>1/Vessel/Trip</i>	
Red Pogy (Silver Snapper, pinky)	14" TL	3/Day	<i>14" TL</i>	<i>3/Day</i>
Dog, Gray, Cubera, Mahogany, Queen, Schoolmaster & Yellowtail Snappers		10/Day (species combined; includes up to 2 red snapper)	<i>12" TL</i>	<i>10/Day (species combined; includes up to 2 red snapper)</i>
Mutton Snapper			<i>16" TL</i>	
Silk & Blackfin Snappers	12" TL		<i>12" TL</i>	
Red Snapper	20" TL	2/Day	<i>20" TL</i>	<i>2/Day</i>
Vermilion Snapper	12" TL	10/Day	<i>12" TL</i>	<i>10/Day</i>
REEF COMPLEX SPECIES Includes sheepshead, spadefish, gray triggerfish, white grunt, knobbed pogy and more (see back note I & J)		20/Day		<i>20/Day</i>
Mullet, striped and white		200/Day (species combined)		

PROHIBITED FINFISH SPECIES

COASTAL WATERS (Internal waters and Atlantic Ocean out to 3 miles)	FEDERAL WATERS (Atlantic Ocean more than 3 miles)
Sharks; (whale, basking, white, sand tiger, bigeye sand tiger, Atlantic angel shark, bigeye sixgill, bigeye thresher, bignose, Caribbean reef, Caribbean sharpnose, dusky, Galapagos, longfin mako, narrowtooth, night, sevengill, sixgill, and smalltail), sturgeon, Nassau grouper, Goliath grouper (jewfish), and spearfish	Sharks; (whale, basking, white, sand tiger, bigeye sand tiger, Atlantic angel shark, bigeye sixgill, bigeye thresher, bignose, Caribbean reef, Caribbean sharpnose, dusky, Galapagos, longfin mako, narrowtooth, night, sevengill, sixgill, and smalltail), red drum, striped bass, sturgeon, Nassau grouper, Goliath grouper (jewfish), and spearfish.

SHELLFISH	STATE COASTAL AND EEZ WATERS (Internal & 0-200 miles)					
	Minimum Length	Bag Limits (per person)				
BLUE CRAB	5" Carapace Width (minimum) 6 3/4" Carapace Width (maximum) (G)	50 crabs/day not to exceed 100 crabs/vessel/day				
HARD CLAM	1" Thick	100 clams/day not to exceed 200 clams/vessel/day				
OYSTER (N)	3" Shell Length	1 bushel/day not to exceed 2 bushels/vessel/day				
BAY SCALLOP (N)(O)		1/2 bushel/day not to exceed 1 bushel/vessel/day				
CONCHS & WHELKS		10/day not to exceed 20/vessel/day				
MUSSELS		100/day not to exceed 200/vessel/day				
SHRIMP (CAST NET ONLY)		<table border="1"> <tr> <th>Closed Shrimping Area</th> <th>Open Shrimping Area</th> </tr> <tr> <td>100 shrimp/day</td> <td>Unlimited</td> </tr> </table>	Closed Shrimping Area	Open Shrimping Area	100 shrimp/day	Unlimited
Closed Shrimping Area	Open Shrimping Area					
100 shrimp/day	Unlimited					



SYMBOLS TO LOOK FOR

- (A) Albemarle Sound Management Area: contact DMF for seasons, areas or other limits; Atlantic Ocean year-round: 2 per person per day at 28" TL minimum; Other coastal areas (excluding Inland Waters-regulations set by Wildlife Resource Commission) year-round: 3 per person per day at 18" TL minimum.
- (B) Charter vessel (licensed by Coast Guard and holding NMFS Charter Vessel Coastal Migratory Pelagic Permit) limit of 60/trip
- (C) Open season through December 31, 2006.
- (D) Unlawful to possess red drum greater than 27 inches total length. Unlawful to gig, spear, or gaff red drum.
- (E) North of Cape Hatteras Scup recreational season is September 18 – November 30 in the EEZ.
- (F) See prohibited species list above; Legal sharks include: sandbar, silky, tiger, blacktip, spinner, lemon, bull, nurse, smooth and scalloped and great hammerhead, blacknose, finetooth, bonnethead, shortfin mako, blue, thresher, porbeagle, and oceanic whitetip. One (1) Atlantic sharpnose (no minimum size) and one bonnethead (no minimum size) per person per trip may be landed in addition to allowable bag limits for other sharks.
- (G) Mature female crabs are exempt from minimum size. Maximum size is effective September through April and applies to mature females only.
- (H) In state or federal waters, federal permit required for Highly Migratory Species, excluding Atlantic bonito, little tunny (albacore), and blackfin tuna: (978) 281-9370 or www.nmfspermits.com. Prior to removal from vessel, all billfishes, swordfish and bluefin tuna must be reported at NC HMS reporting stations. DMF website for more details.
- (I) Reef complex species: whitebone porgy, jolthead porgy, knobbed porgy, longspine porgy, sheepshead, gray triggerfish, queen triggerfish, yellow jack, crevalle jacks, bar jack, almaco jack, lesser amberjack, banded rudderfish, white grunt, margates, spadefish, scup, and hogfish, 20 per person per day in combination.
- (J) For seasons or closures for tunas, billfishes, and sharks contact NMFS Highly Migratory Species Division (1-800-894-5528 or www.nmfspermits.com or www.nmfs.noaa.gov). For snapper, grouper, and mackerels contact the South Atlantic Council (1-843-571-4366 or www.safmc.net).
- (K) Groupers in the management unit include: red, yellowfin, yellowmouth, black, warsaw, snowy, yellowedge, and misty grouper; gag, scamp, speckled hind, red hind, rock hind, graysby, and coney. The five (5) grouper bag limit in the EEZ also includes blueline, golden, and sand tilefish. No possession of Nassau and Goliath grouper.
- (L) It is unlawful to possess Large Coastal sharks less than 54 inches (Fork Length).
- (M) Season, areas, or other limits may be set by DMF.
- (N) Contact DMF for seasons, areas, or other restrictions.
- (O) During the open season, scallop harvest restricted to certain hours of the day, contact DMF for all restrictions.

Total length (TL) is measured from tip of snout with mouth closed to top of compressed tail. Fork length (FL) is measured from tip of snout to middle of fork in tail. Lower jaw fork length (LJFL) is measured from lower jaw to middle of fork in tail. Curved fork length (CFL) is the measurement of the length taken in a line tracing the contour of the body from the tip of the upper jaw to the fork of the tail. Anglers cannot catch both a federal and state bag limit for the same species on the same trip.

Ocean boundary is defined as water seaward of the COLREGS Demarcation Lines as indicated on National Ocean Service navigation charts.

No one may possess aboard a vessel or while engaged in fishing any fish subject to limits without head and tail attached, except for alewife and blueback herring used for bait provided not more than two fish per boat/operation may be cut at any one time – Reference 15A NCAC 3M .0101

Morehead City Office (24 hours) (800) 682-2632 or (252) 726-7021 NMFS (Fed. Reg.) (813) 893-3722	Elizabeth City Office (800) 338-7805 or (252) 264-3911	Columbia Office (800) 405-7774 (252) 796-1322	Washington Office (800) 338-7804 or (252) 946-6481	Wilmington Office (800) 248-4536 or (910) 796-7215
--	--	---	--	--

THIS FLYER IS EFFECTIVE OCTOBER 23, 2006 AND IS FOR GENERAL INFORMATIONAL PURPOSES AND HAS NO LEGAL FORCE OR EFFECT. FISHERY RULES ARE SUBJECT TO CHANGE. THESE RESTRICTIONS APPLY TO FISH TAKEN FOR RECREATIONAL PURPOSE AND INCLUDE HOOK AND LINE. Updated State regulations can be found at www.ncdmf.net/recreational/recguide.htm and updated Recreational Commercial Gear License information can be found at www.ncfisheries.net/license/RCGL.htm.